

Function

Movable electronic water level sensor automatically monitors quick fill or safe-off functions in very shallow water depths. Sensor is adjustable in height after installation. Low voltage for safety. Connects to Crystal Fountains' ECL series control panel. Install vertically.

Specifications

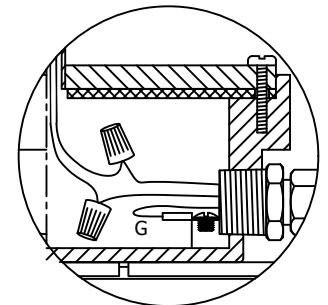
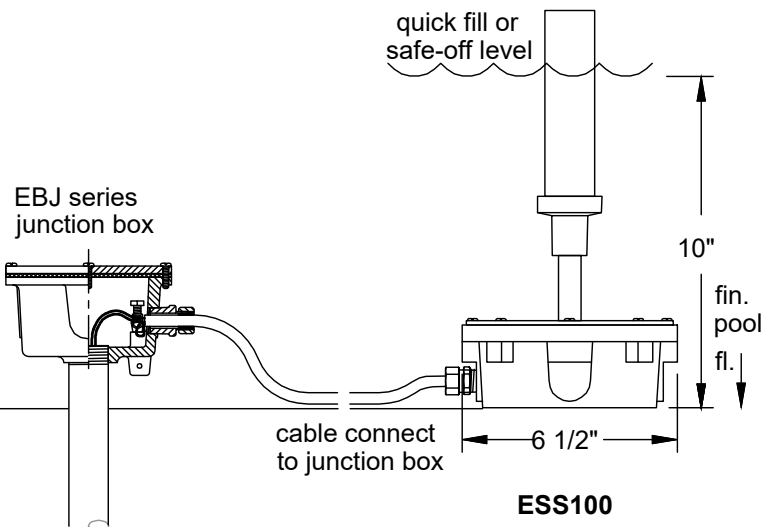
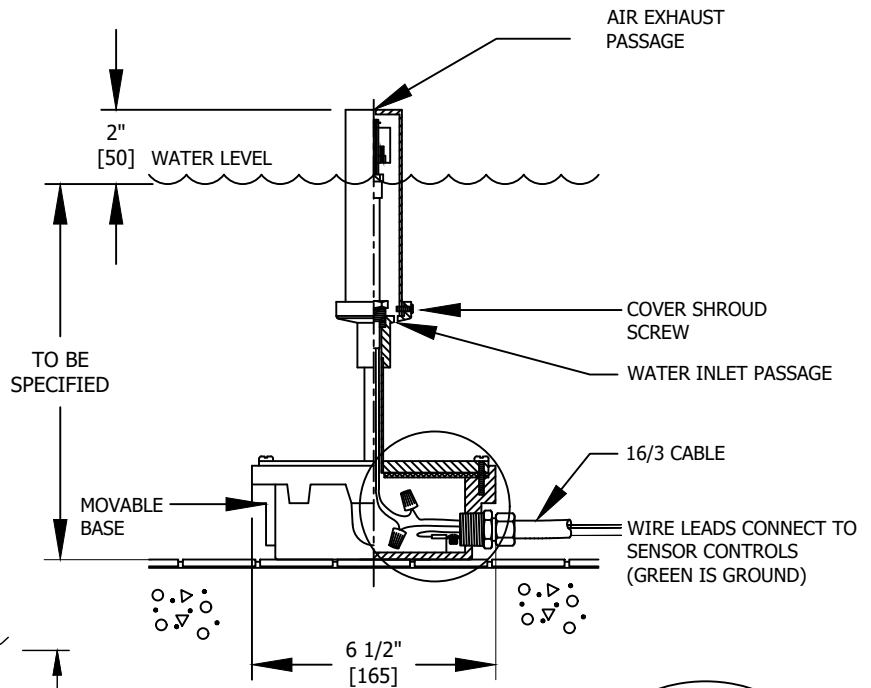
Construction of sensor box and lid shall be cast bronze. Sensor enclosure shall be brass and copper with neoprene gasket and seal. Sensor shall be reed switch enclosed in a polypropylene, magnetically actuated float with 1" level adjustment. Submersible cable shall be 9 ft., 16/3 (ESS100)

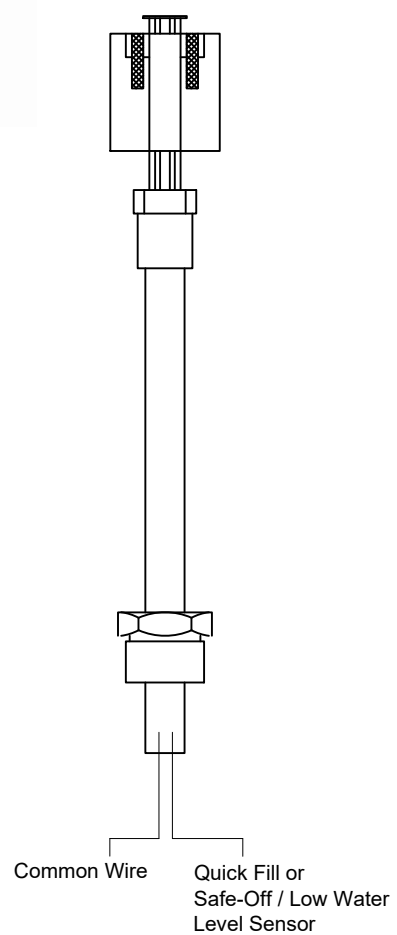
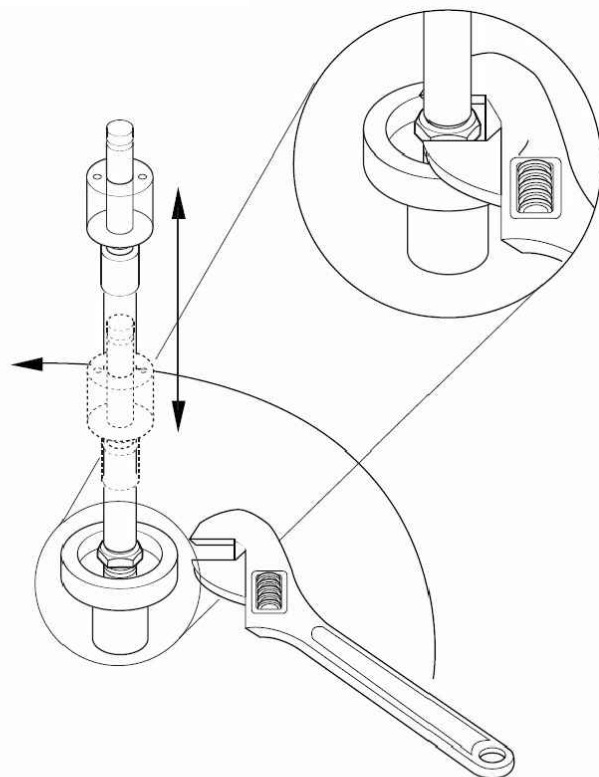
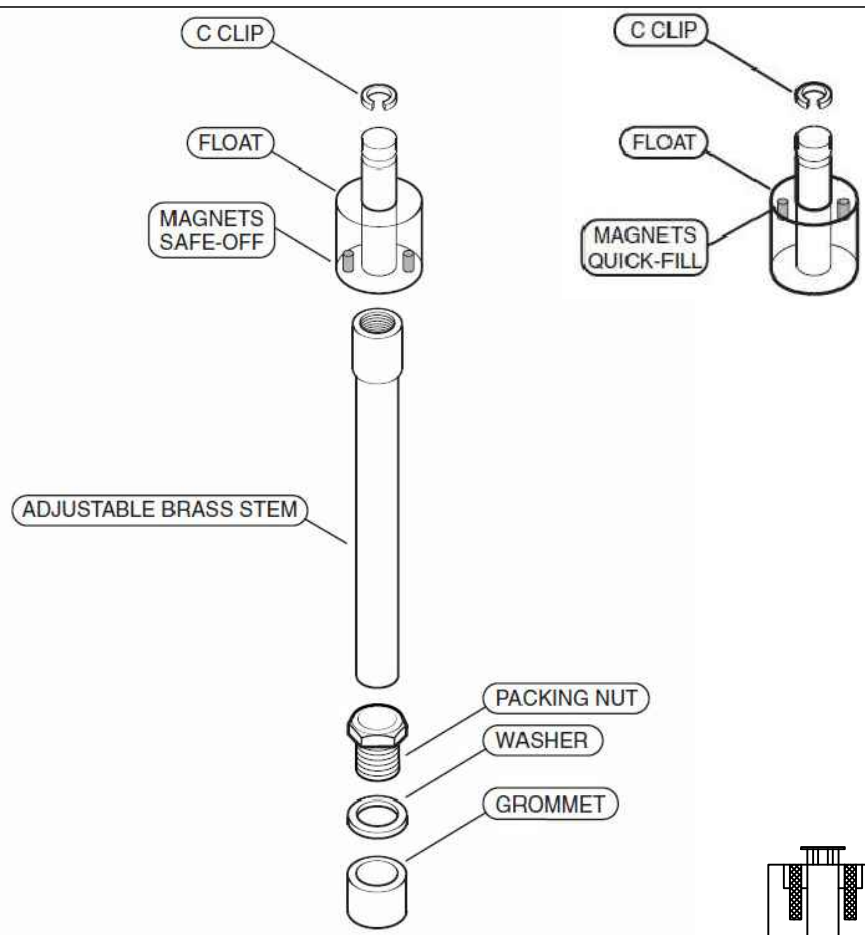
ESS100 - 1 sensor, quick fill or safe-off

Voltage and current ratings:
24 VAC/DC, 0.28A

Notes

1. UL and ULC listed.
2. For use in Class 2 circuits only.
3. Wiring methods must comply with Class 3 or better circuits.
4. Custom sizes available upon request.
5. Connect to Crystal Fountains junction box (EBJ series).





To adjust the height of the sensor, simply loosen the packing nut and raise or lower the brass stem. Re-tighten the packing nut after the adjustment.